



## Single-Speed Installation Instructions

Covers Parts #8296

### Kit contents:

- 36-T metal output gear
- 18-T metal input gear
- Output shaft
- Input shaft spacer
- Output shaft spacer
- Shift shaft seal

### Tools required:

- 2.5mm hex wrench
- 1.5mm hex wrench
- 1.0mm hex wrench

Fig. 1

Remove the following parts from the two-speed transmission:

- 24-T output gear
- 36-T output gear
- 18-T input gear
- 30-T input gear
- Output shaft
- 5x10x4 BB (1)
- 5x8x2.5 BB (2)
- 5x8x0.5 PTW (2)
- Shift dog
- Drive hub
- Shift fork

The parts listed above will not be reused for the single speed assembly.

Retain and reuse the 2x10.3 pins from the input shaft (A) and the output shaft (B).

The second pin from the input shaft (C) will not be reused.

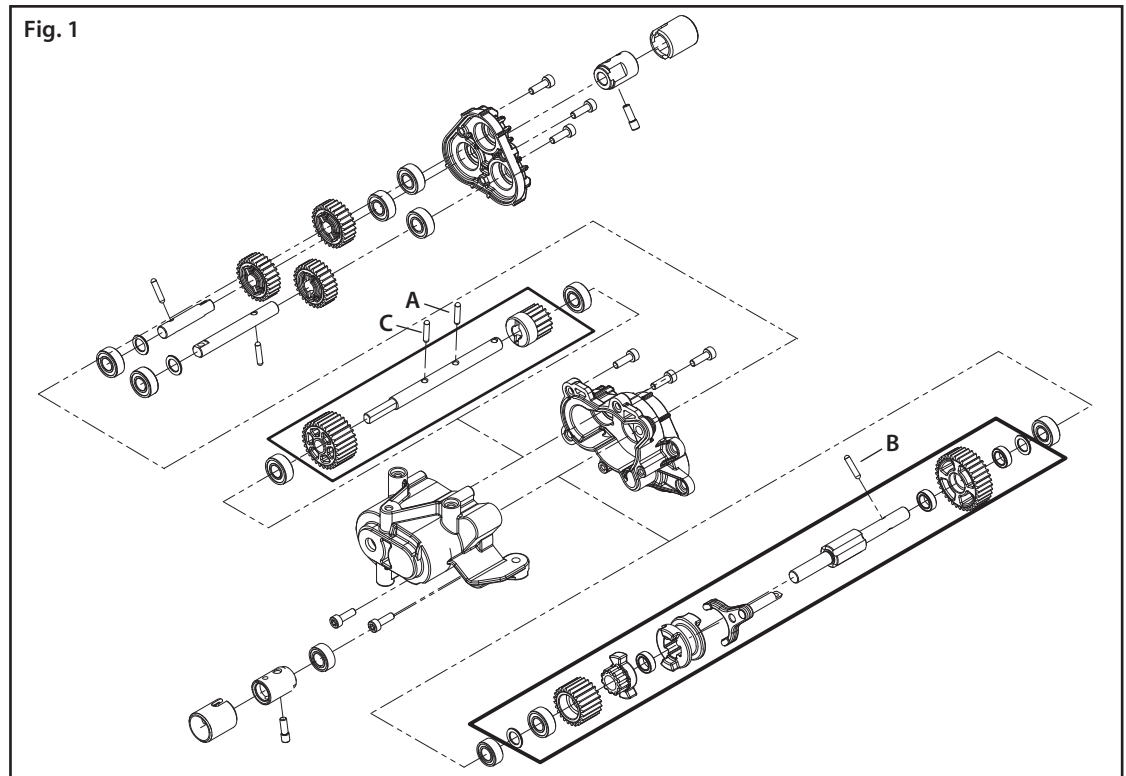


Fig. 2

Install the single-speed parts:

- 1 Install the 18-T metal input gear, 2x10.3 pin, and the short spacer onto the input shaft.
- 2 Install the 36-T metal output gear, 2x10.3 pin, and long spacer onto the output shaft. Install the pin in the hole closest to the middle of the output shaft.
- 3 Install the input and output shafts into the transmission housing.
- 4 Install the transfer case gear and 2x10.3 pin onto the transmission output shaft.
- 5 Install the input and output transfer case shaft assemblies.
- 6 Install the transfer case cover.
- 7 Install the shift shaft seal into the rear transmission housing.

